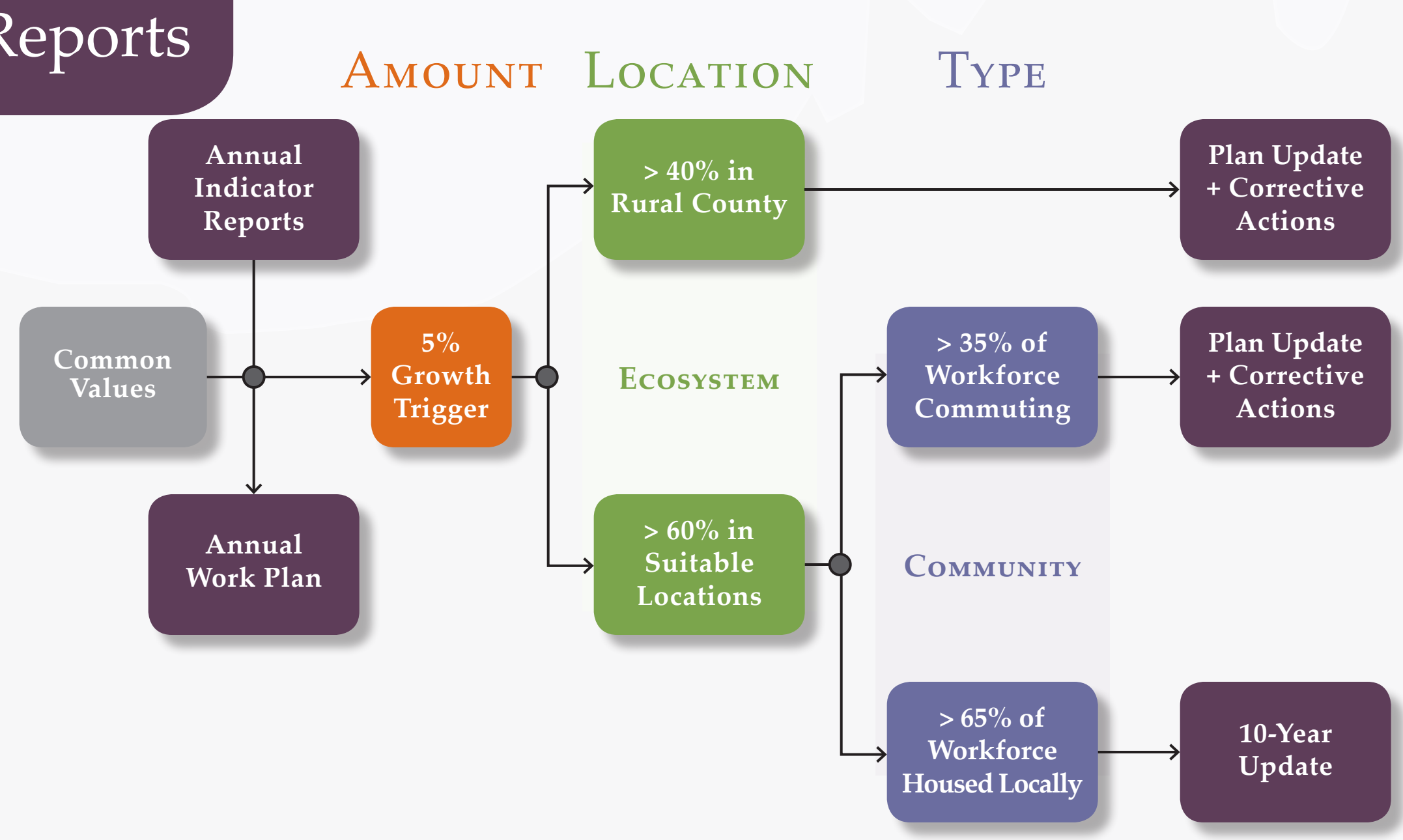
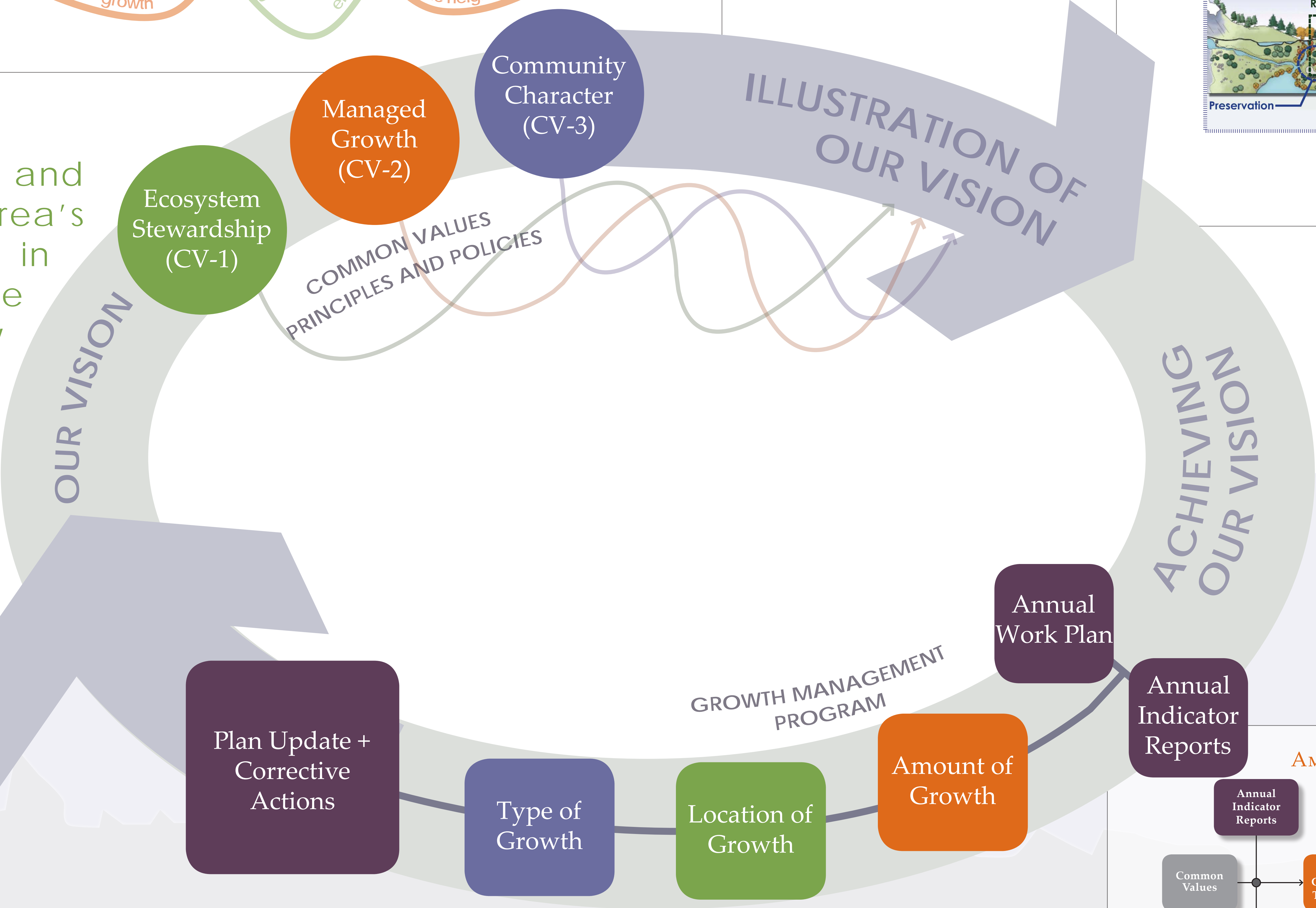
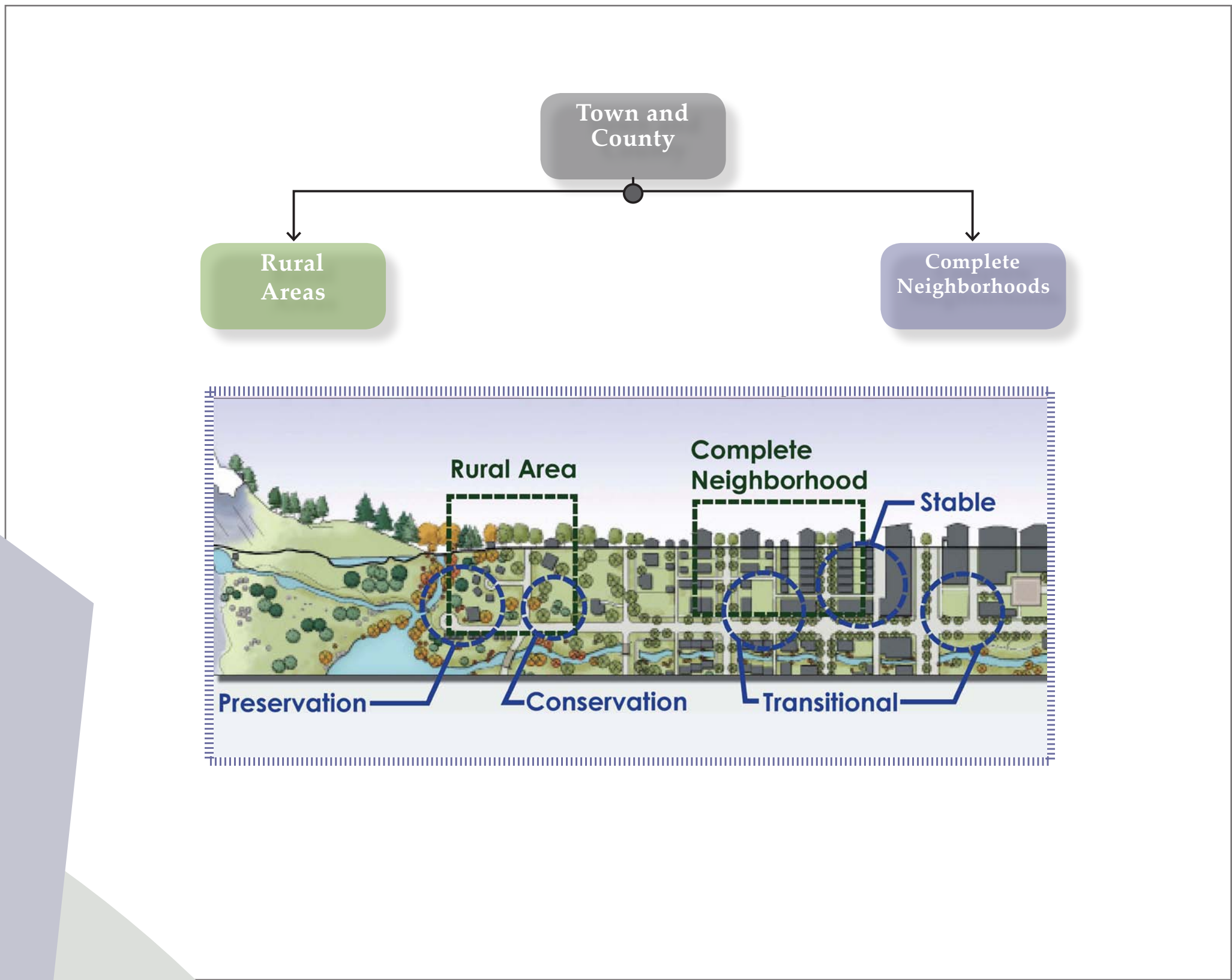
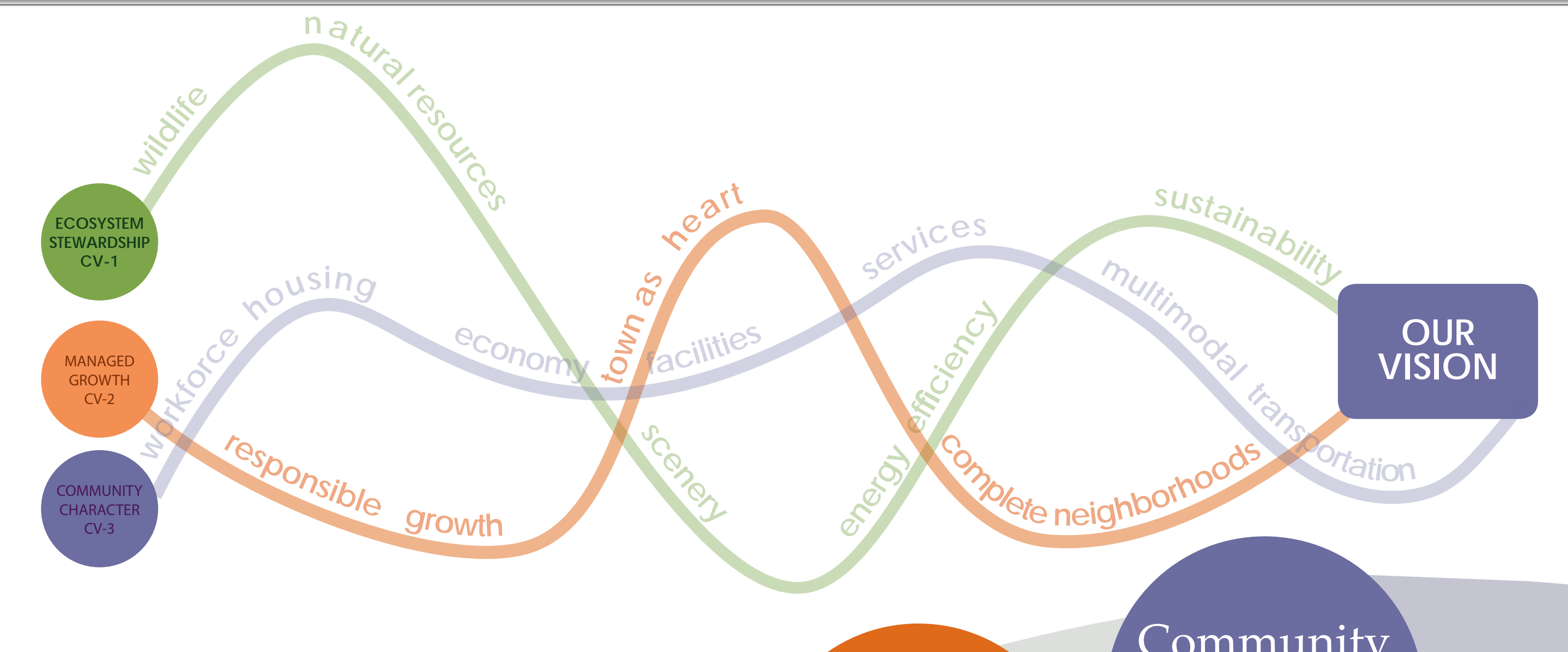


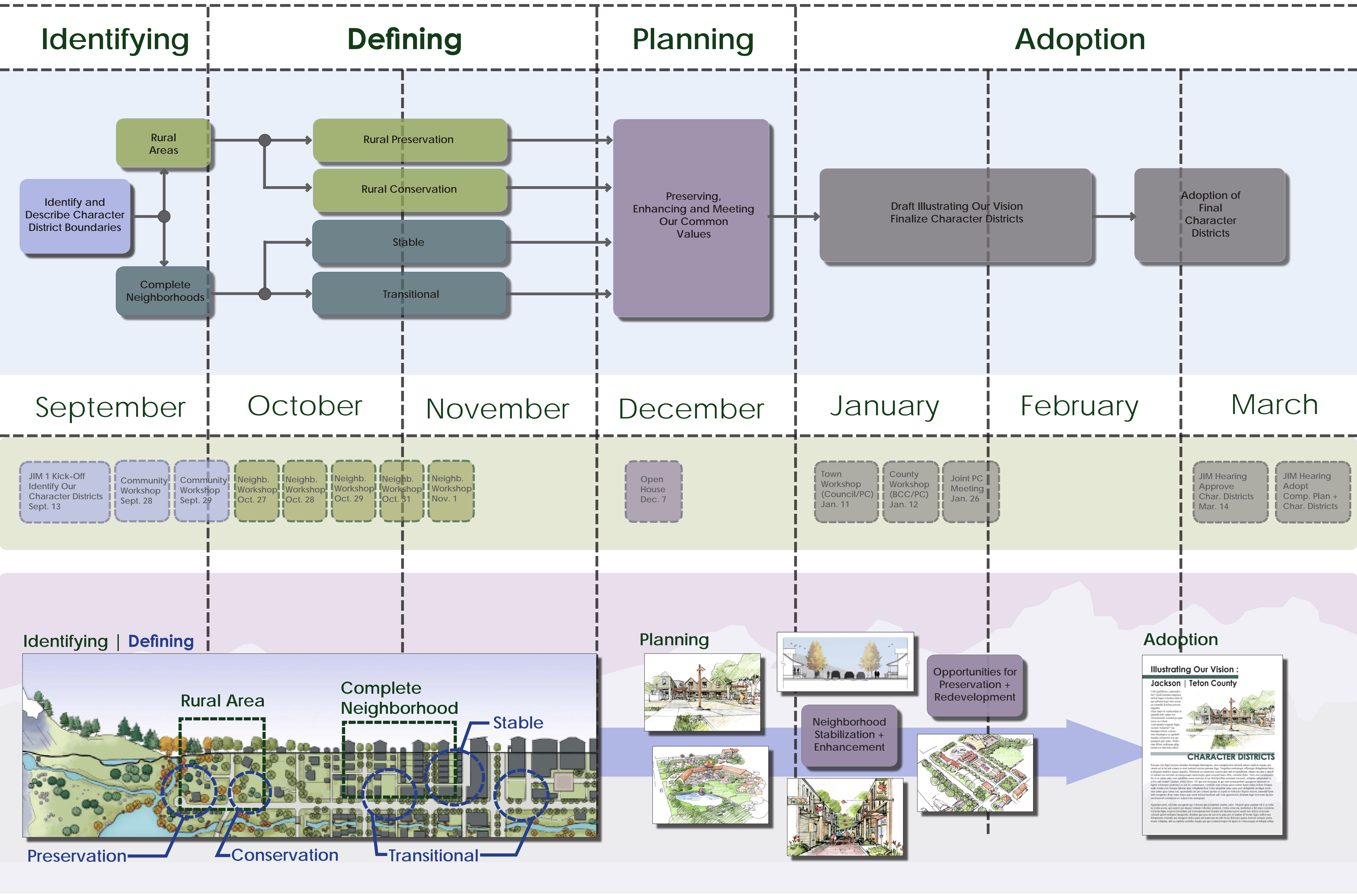
Jackson | Teton Comprehensive Plan

Plan Document Introduction

"Preserve and protect the area's ecosystem in order to ensure a healthy environment, community and economy for current and future generations."



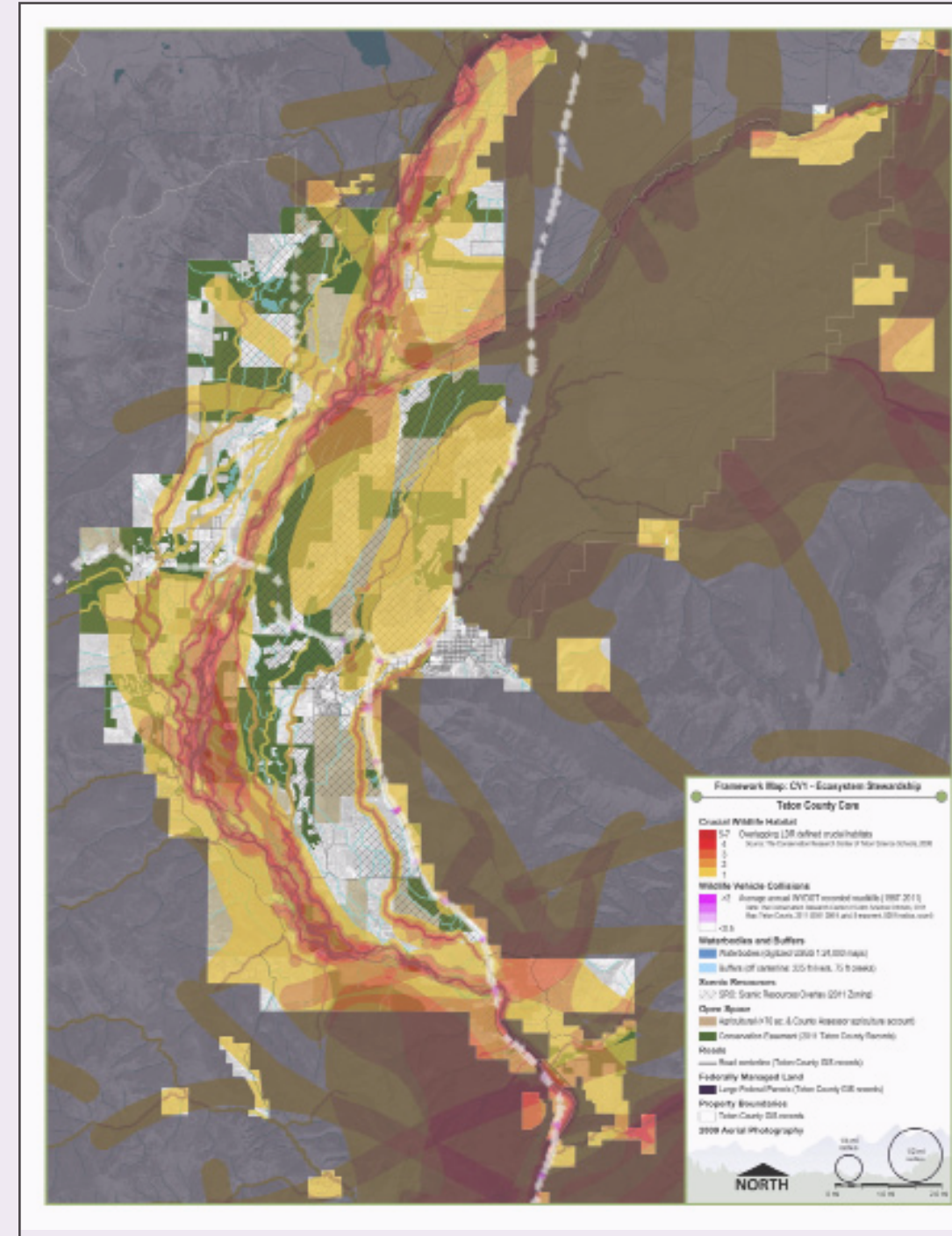
Jackson | Teton Comprehensive Plan: Illustrating Our Vision



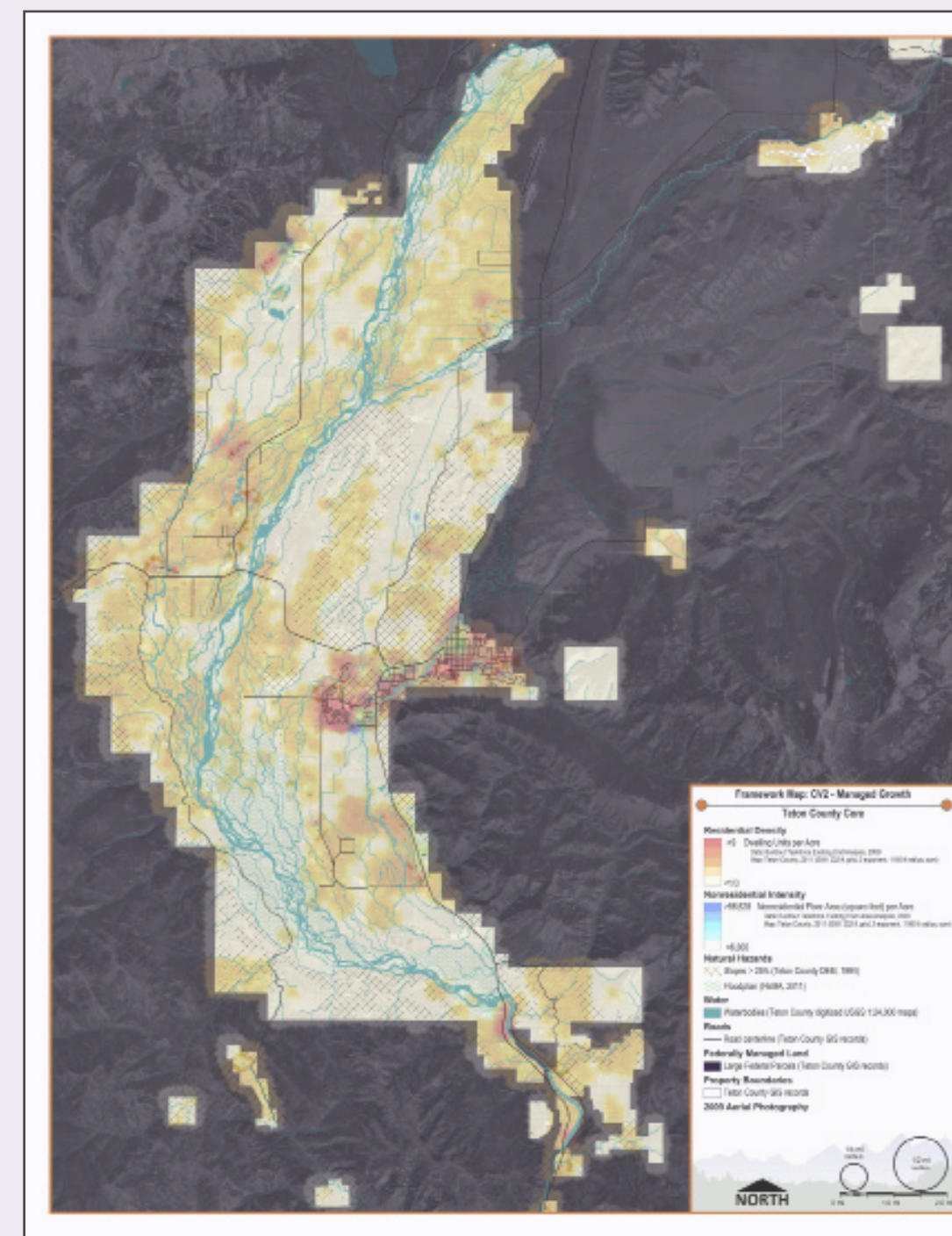
Jackson | Teton Comprehensive Plan

Identifying Character Districts : Process

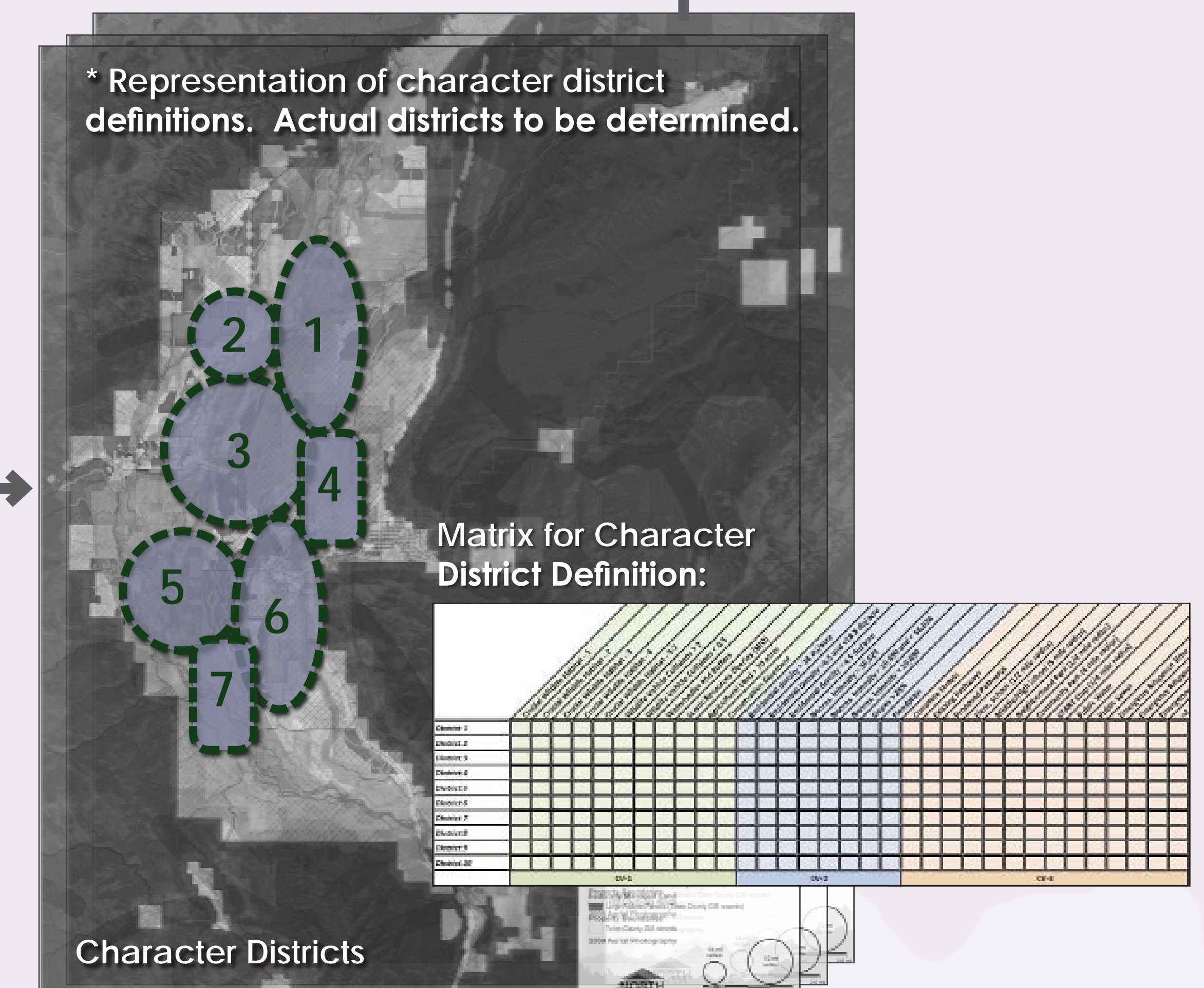
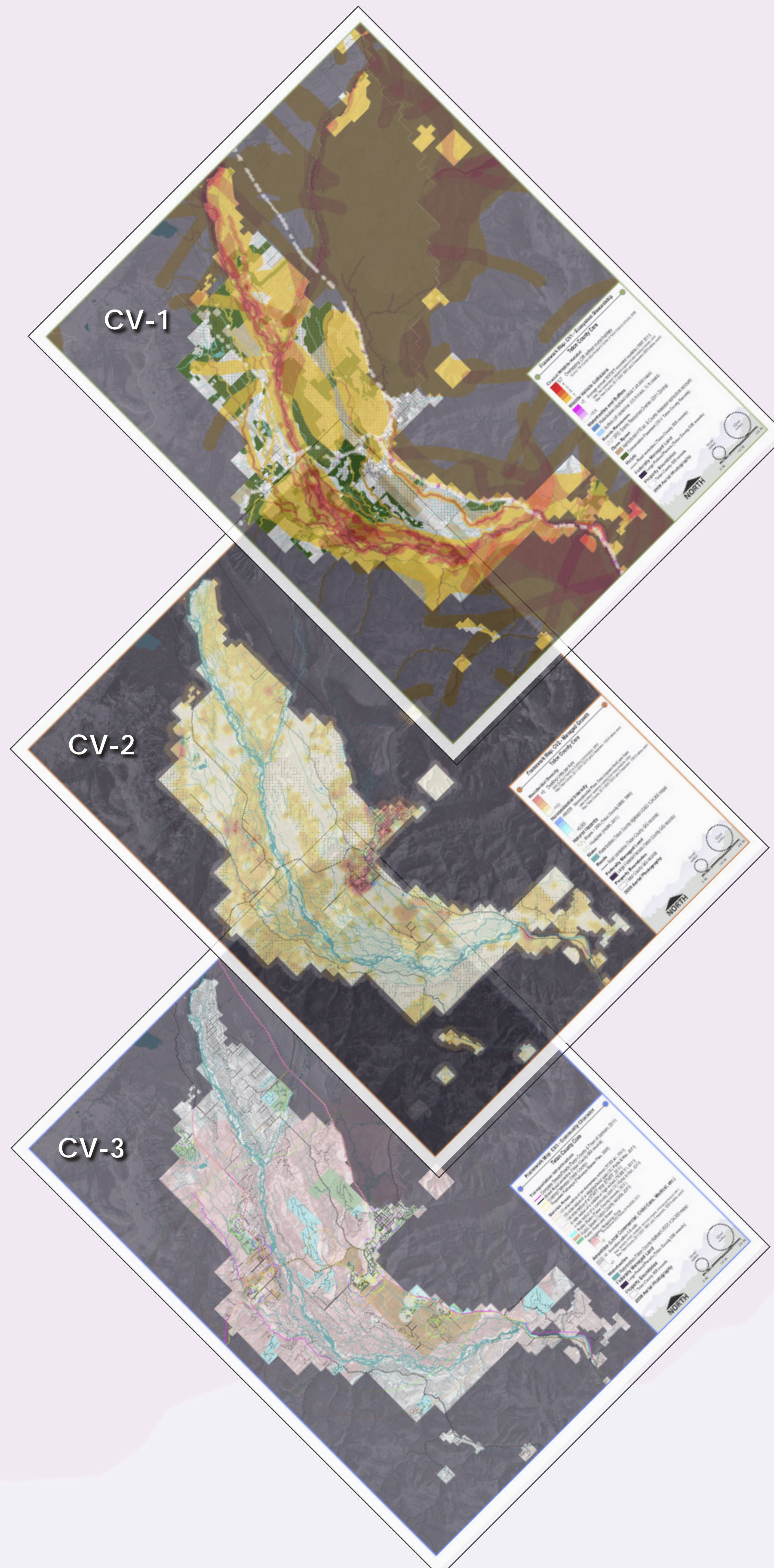
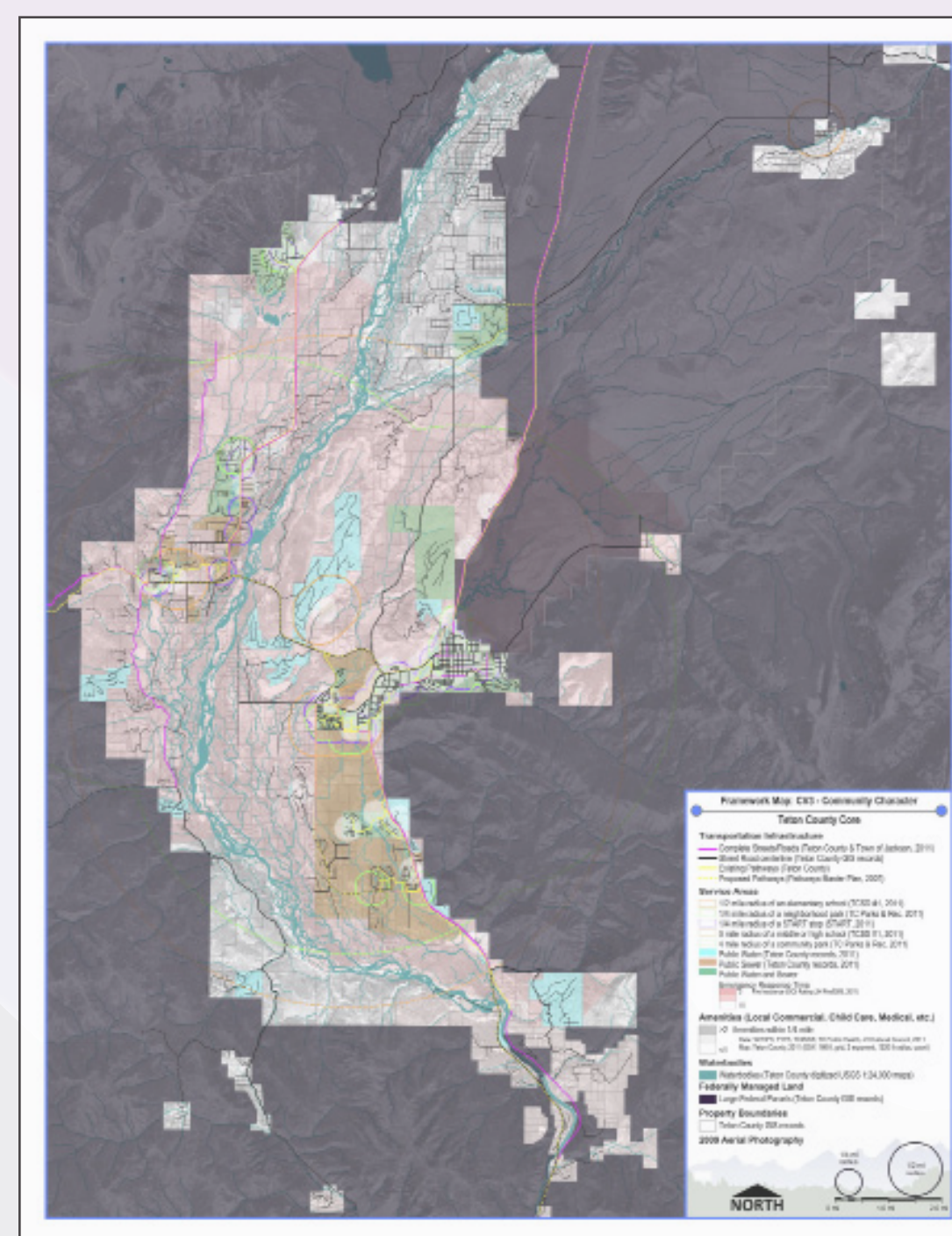
CV-1
Ecosystem
Stewardship



CV-2
Managed
Growth



CV-3
Community
Character



Complete Neighborhoods Provide:

- defined character and high quality design;
- public utilities;
- quality public spaces;
- a variety of housing types;
- schools, childcare, commercial, recreation, and other amenities within walking distance
- connection by complete streets

Rural Areas Provide:

- viable wildlife habitat and connections
- natural scenic vistas
- agricultural and undeveloped open space
- abundance of landscape over built form
- limited, detached single family residential development
- minimal additional nonresidential development

Comparison
of Areas

Layered
Analysis

Character
Districts

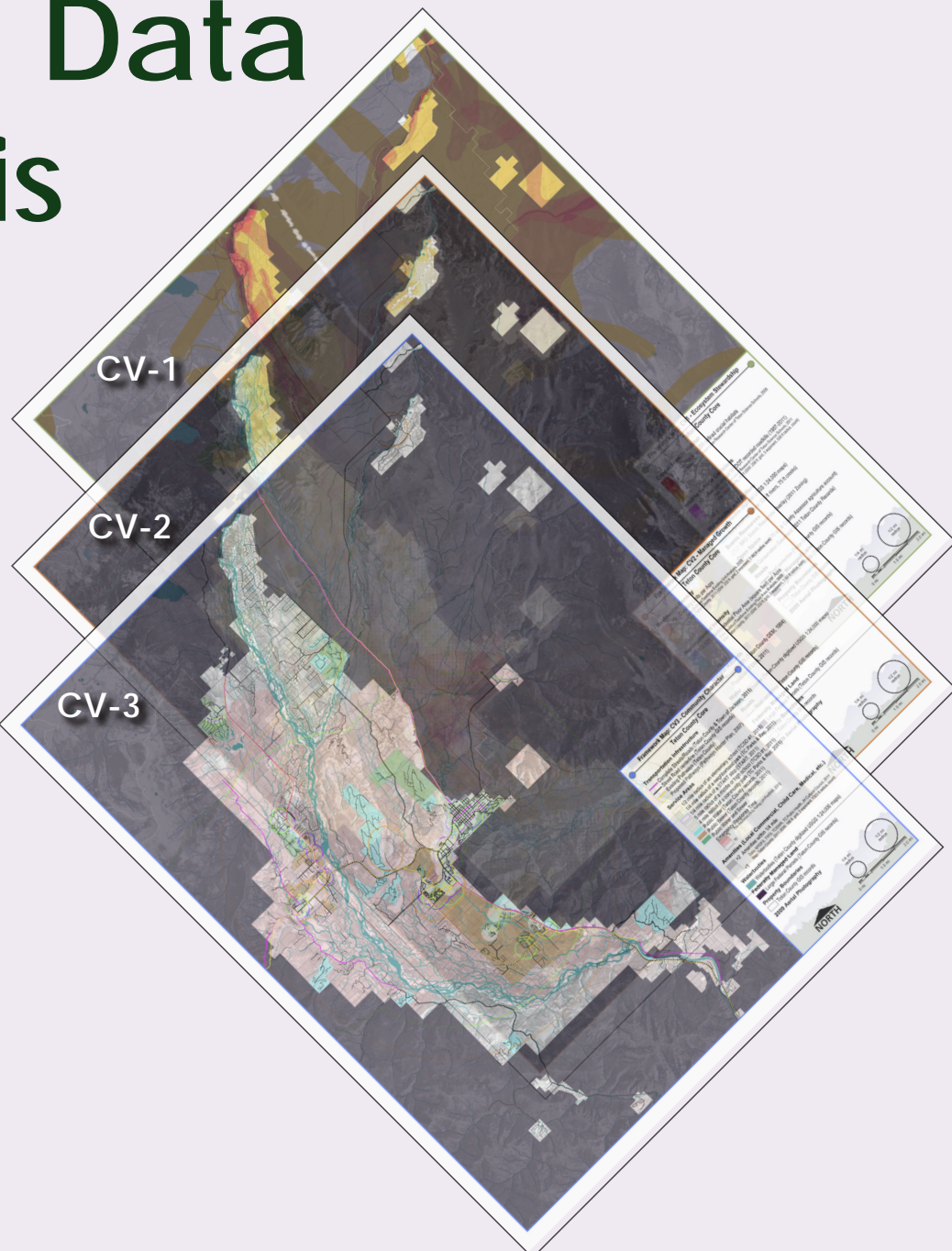
Jackson | Teton Comprehensive Plan

Phase II: Process

Phase 1 Comments



Phase I Data Analysis



Public Comment 2009 - Present

Jackson | Teton County Comprehensive Plan
Analysis of Database for District-Specific Comments
October 13, 2011

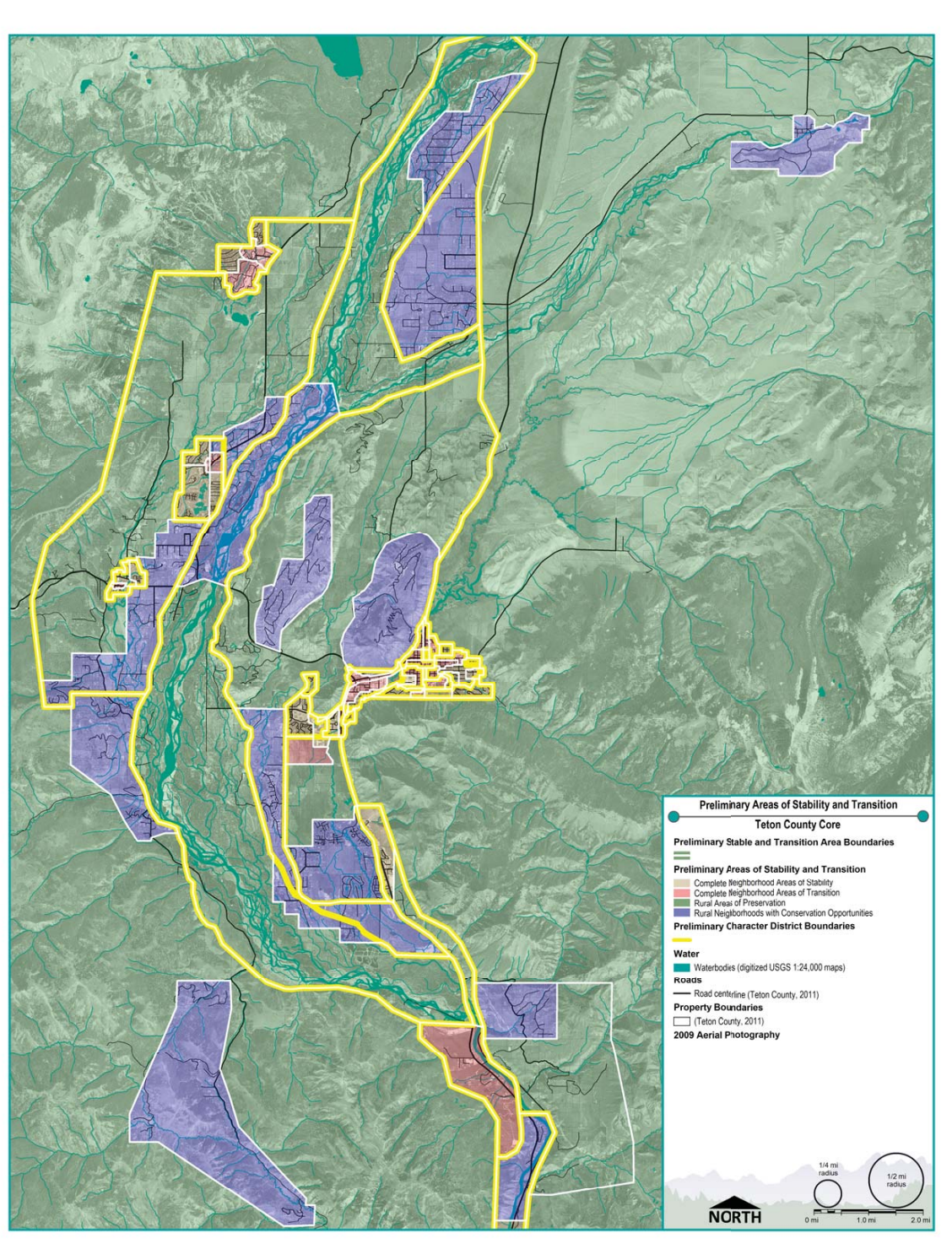
All comments collected as a part of the Comprehensive Plan process since April 2009 have been recorded in a Microsoft Access database and categorized by topic, district, date, project phase and other groupings. Comments can be organized based on any of these groupings and summarized in various ways, allowing the database to serve as a valuable tool for informed decision-making. The database represents a snapshot of all comments received at any point in time, and will be continuously updated as additional comments are collected. Currently, the database contains 423 comments relating to at least one specific Character District.

Comments were organized into the 12 Character Districts. Attached to this summary is each comment that applies to each district. A single comment may be applicable to multiple districts, which is why the sum of the comments in each district does not equal the total number of comments. Because the comment database was originally developed prior to the creation of the Character Districts, comments are organized in the database by 2009 Census Tract (see (FUP) Districts). The number(s) of the FUP district(s) that comprise each Character District are shown in parentheses in the below table.

Character District (FUP Districts)	Total Comments	Public Comments	Staff PC	STAG
1. Town Square (10)	14	5	5	4
2. Town Center (10, 11, 12, 13, 14, 15)	35	25	21	6
3. Town Westside (10, 11, 12, 13, 14, 15)	35	25	21	6
4. Mid-Town (11, 12)	10	10	10	0
5. West Side (11, 12)	10	10	10	0
6. South Side (11, 12)	10	10	10	0
7. South Valley (11, 12)	10	10	10	0
8. River Bottoms (11, 12)	10	10	10	0
9. South Valley (11, 12)	10	10	10	0
10. South Park (12)	10	10	10	0
11. White (11)	10	10	10	0
12. Aspen/Pine (10)	10	10	10	0
13. Aspen/Pine (10)	10	10	10	0
14. Aspen (10)	10	10	10	0
15. North Teton (10, 11, 12)	10	10	10	0

The following 15 tables further analyze the comments for each Character District. The topic(s) of each comment pertaining to a district are summarized. A single comment can apply to multiple comments, which is why the sum of the comments on each topic does not necessarily equal the total number of comments.

Character District Descriptions



Character District Maps

Existing Character

Future Character

Identify Areas of:
Stability, Transition, Rural
Preservation + Rural
Conservation