

DRAFT

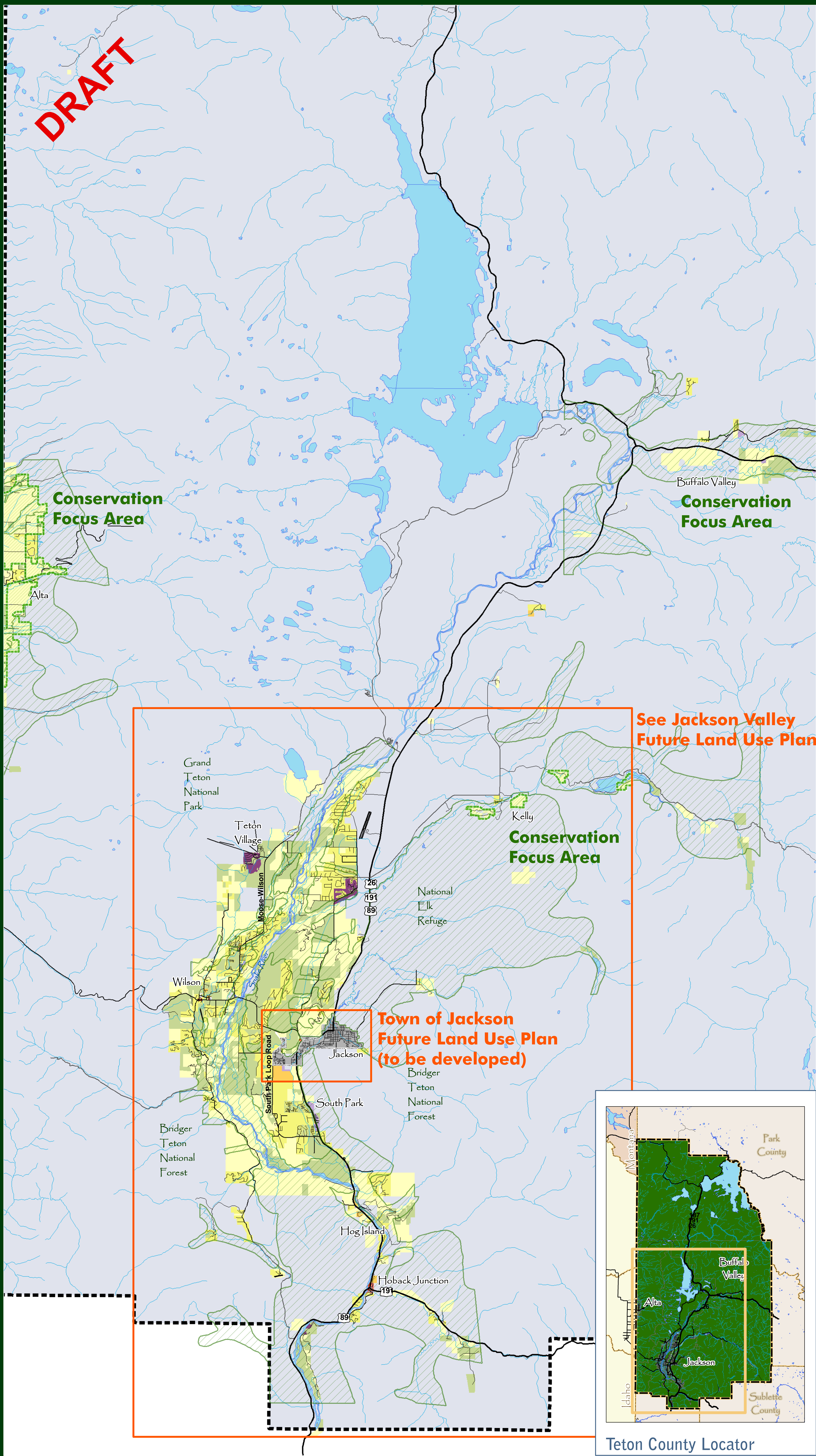
# Jackson Teton County

## COMPREHENSIVE PLAN

### LEGEND\*

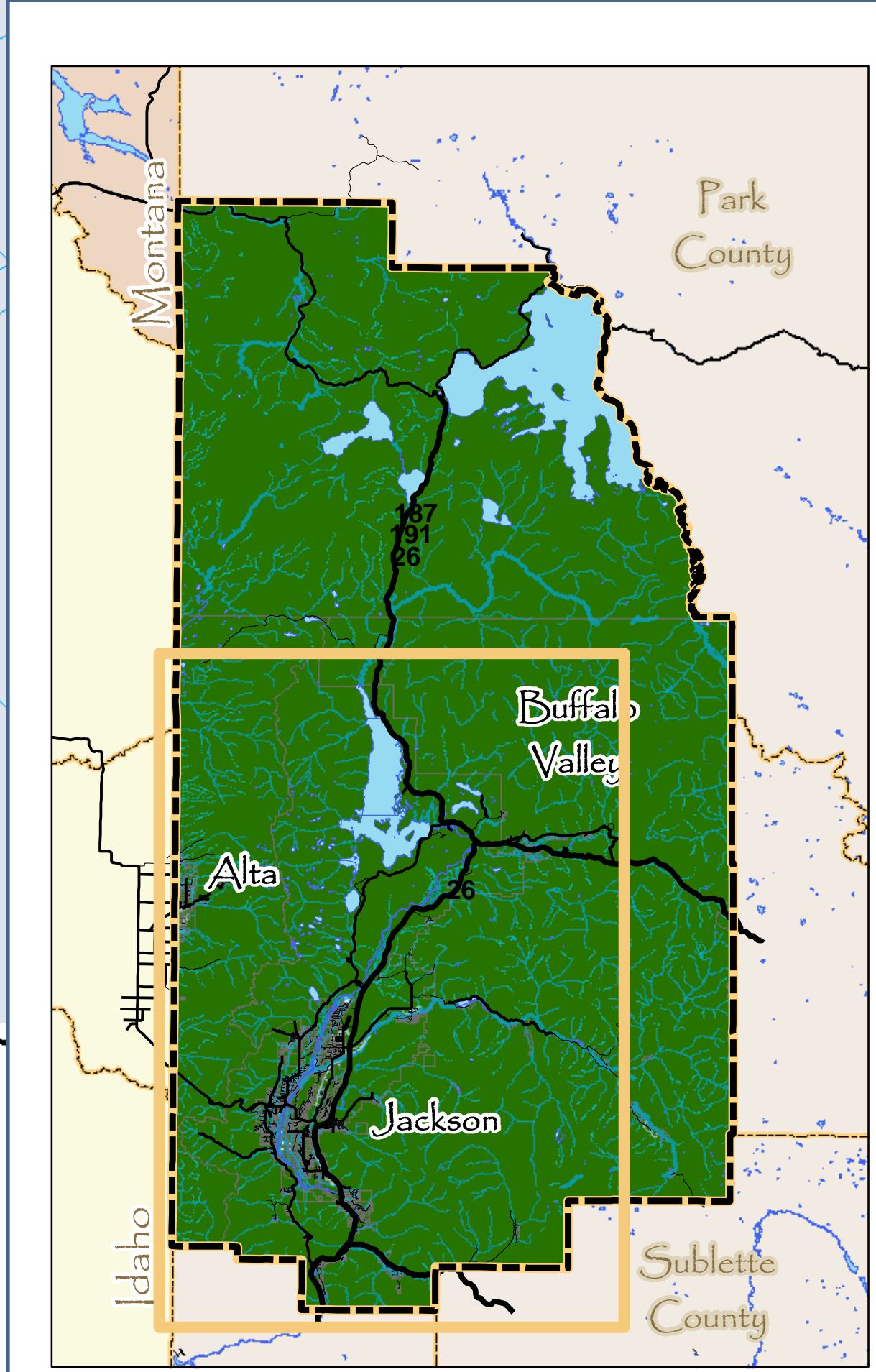
- County Limits
- Town of Jackson Limits
- Planned Resort
- Commercial: Auto-Oriented
- Mixed-Use: Commercial (Downtown / Village)
- Mixed-Use: Commercial (Redevelop)
- Mixed-Use: Residential and Office
- Business/Employment
- Residential: Town Mixed-Use
- Residential: Town
- Residential: Suburban / Single Family
- Residential: Single Family Low
- Residential: County Rural
- Open Space / Conservation Easement
- Public Land / Civic
- Natural Resources

\* Some of these land uses will appear in the Town of Jackson and are not in the county unincorporated areas.

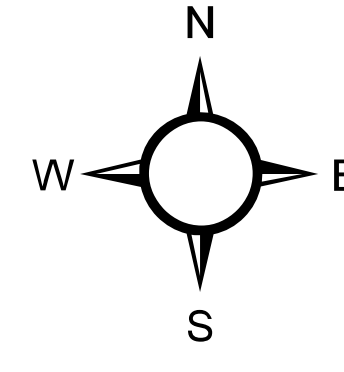


See Jackson Valley Future Land Use Plan

Town of Jackson Future Land Use Plan (to be developed)



Teton County Locator



0 1.25 2.5 5 Miles

Data Source: Greenwood Mapping, NAICS, 2000  
Census TIGER Files, USGS  
Teton County Tax Assessor



Mapped by: Clarion Associates  
May 7, 2008