

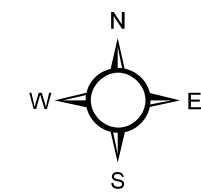
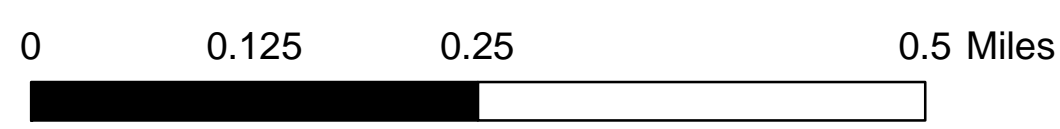
LEGEND

Focus Area Opportunities

- Pedestrian Corridor Enhancements
- Commercial/Employment
- Downtown Mixed-Use
- Mixed-Use Infill/Redevelopment
- Mixed-Use Office
- Residential Mixed-Use

Other

- Community Gateways
- Circulation Framework
- Town of Jackson Limits
- Civic
- Parks and Open Space
- Proposed Sub-Area Plan

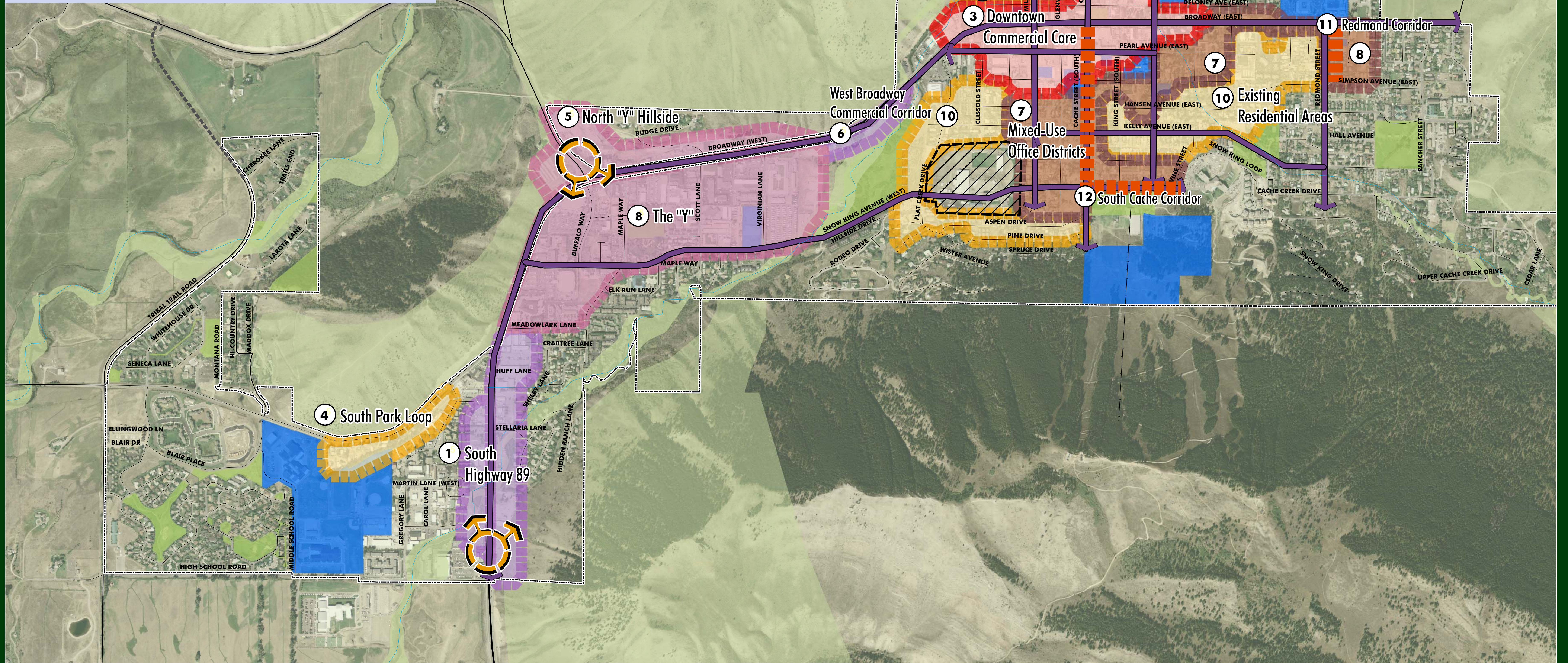


Data Source: Greenwood  
Mapping, NAICS, 2000 Census TIGER Files, USGS, Teton County Tax Assessor

Mapped by: Clarion Associates  
May 7, 2008

Note: Boundaries are conceptual and are not intended to be parcel specific.

DRAFT



# Town of Jackson - Focus Areas

